

# Fota Business Park Commercial Units

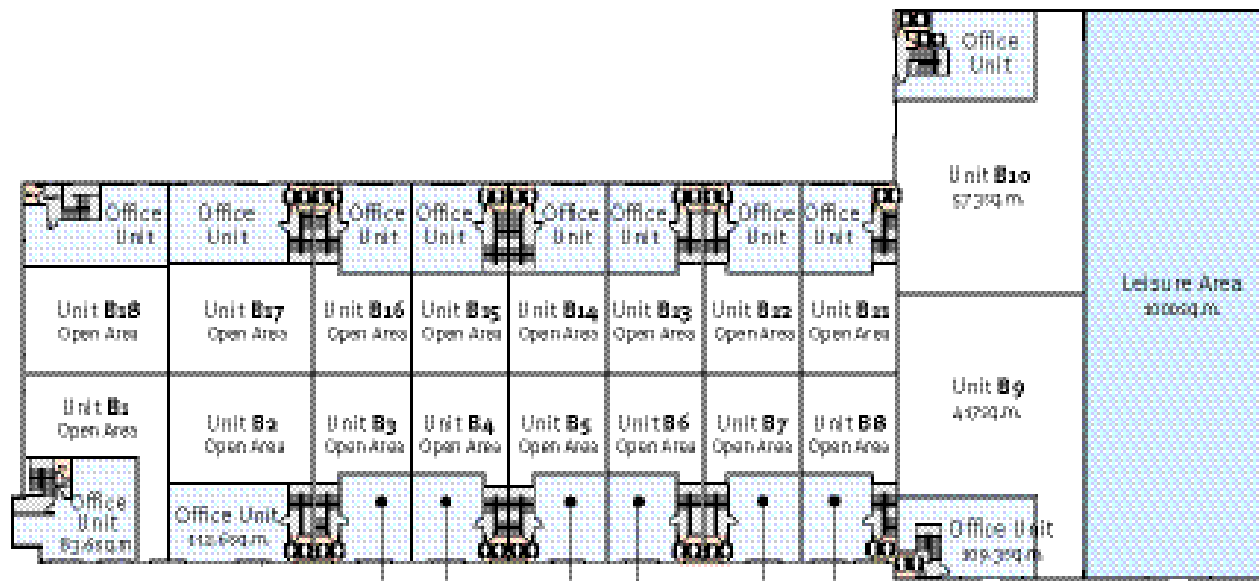


**fota**  
RETAIL &  
BUSINESS  
PARK



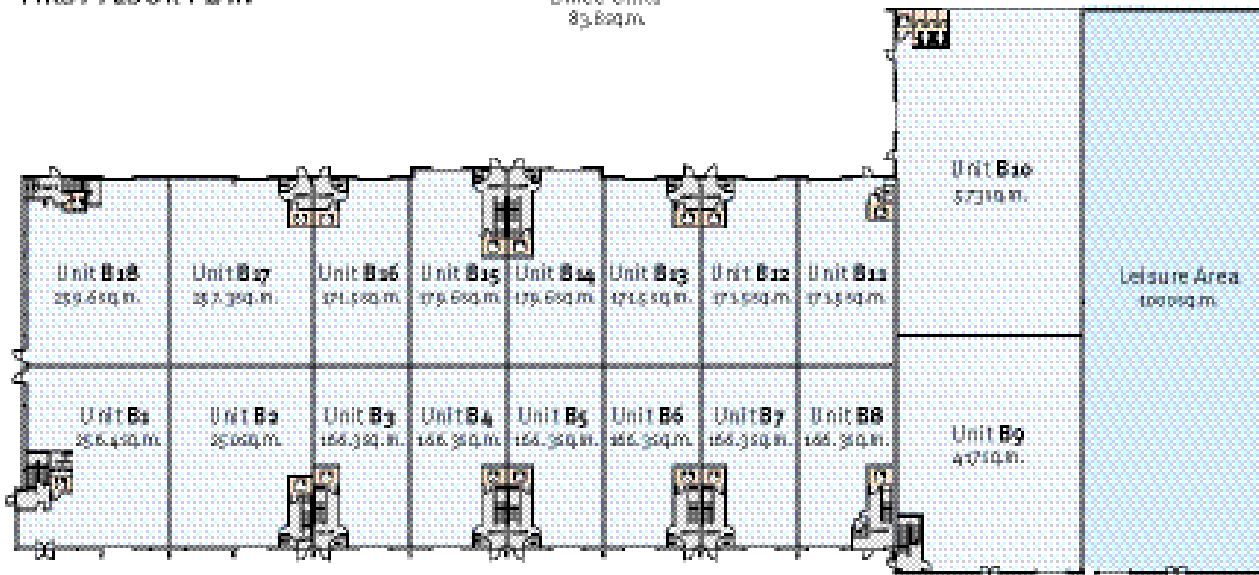
CARRIGTWOHILL  
CORK • IRELAND

- Part of the Fota Retail and Business Park, which is one of the largest and architecturally most advanced Retail Warehouse & Commercial Developments in the Munster area
- Prestigious Business Campus environment
- High profile location with superb access from N25 dual carriageway
- Suitable for a wide variety of business, showroom and trade counter uses
- Units ranging from 250 sq.m to 1000 sq.m
- Landscaped park with excellent car parking facilities



FIRST FLOOR PLAN

Office Units  
89,800 m.



GROUND FLOOR PLAN



## Business Park Specifications Commercial Units

- High profile location close to main entrance of park
- High quality business units
- Glazing on front elevation
- Approx 6m eaves height
- Mezzanine floor incorporated
- External loading and delivery area
- Full planning permission for an indoor children's activity/leisure area of approx. 1,000 sq.m.

### JOINT AGENTS



1 South Mall, Cork  
Tel: 021 4275079  
Fax: 021 4272405  
Contacts:  
Margaret Kelleher (mkelleher@lisney.com)  
Edward Hanafin (ehanafin@lisney.com)



23 Marlboro Street, Cork  
Tel: 021 4277745  
Fax: 021 4272346  
Contact:  
Gerard O'Callaghan (gocallaghan@remax.net)

