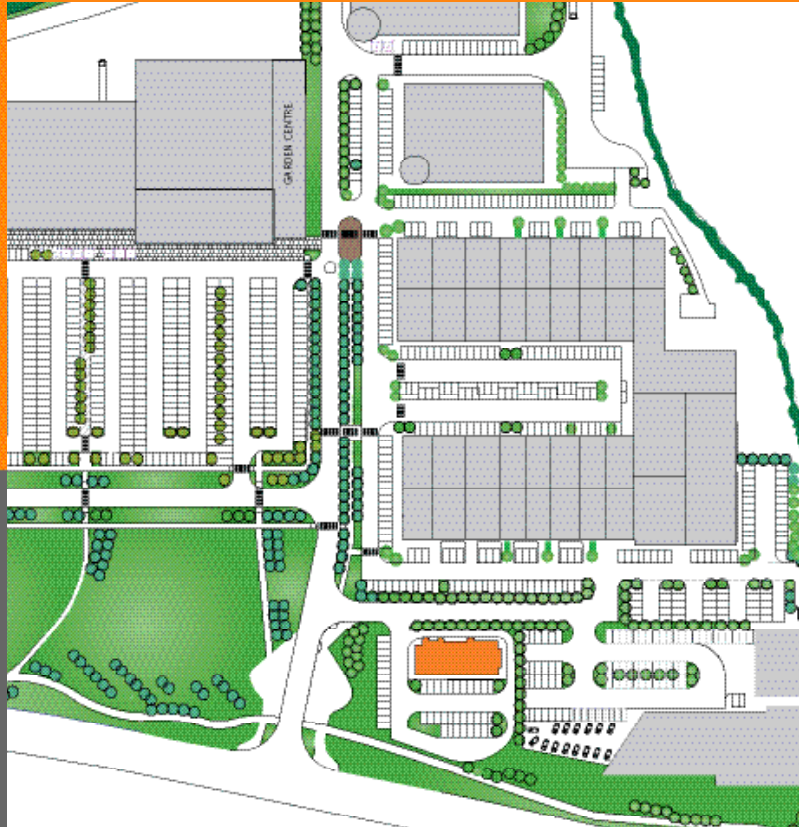


# Fota Business Park Fast Food Restaurant

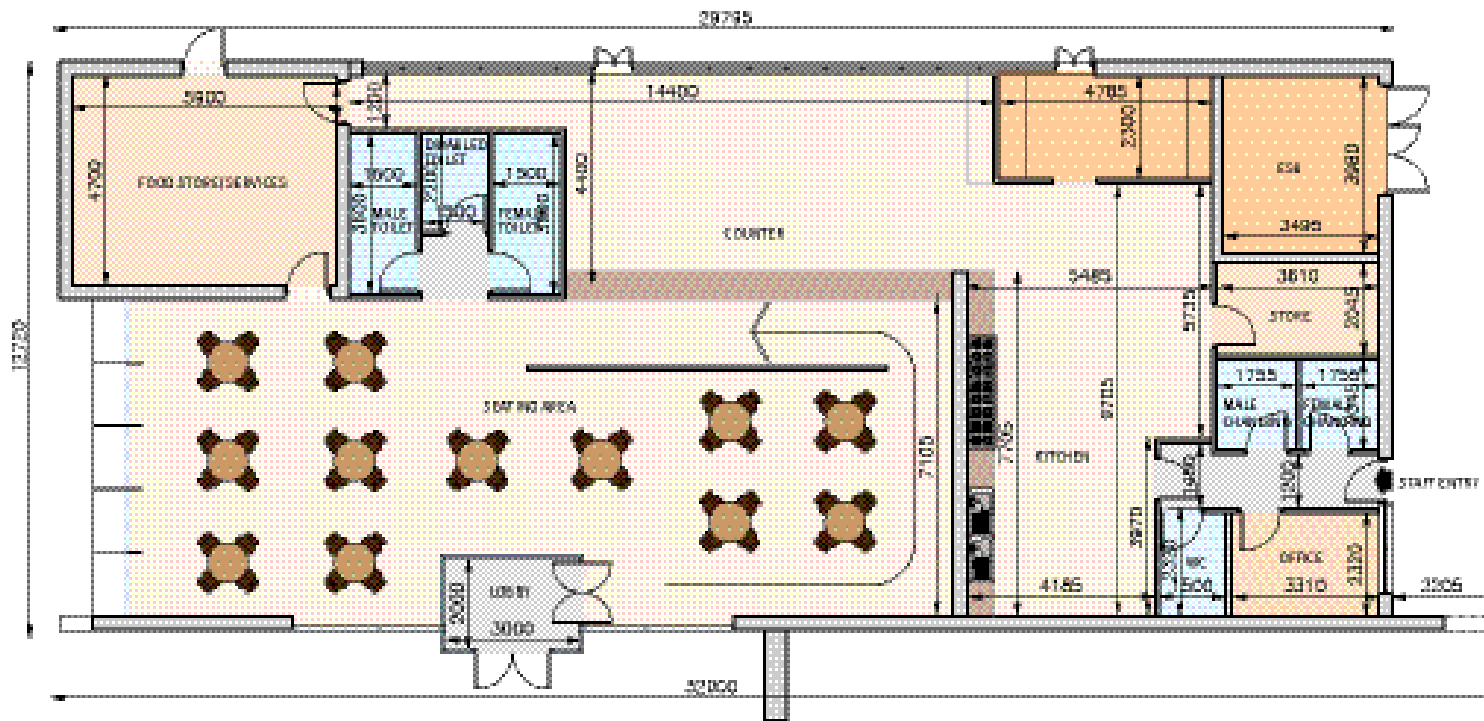


**fota**  
RETAIL &  
BUSINESS  
PARK



CARRIGTWOHILL  
CORK • IRELAND

- Ultra modern, high profile building & design
- Part of the Fota Retail and Business Park, which is one of the largest and architecturally most advanced Retail Warehouse & Commercial Developments in the Munster area
- High profile location just off the N25 dual carriageway
- Situated in a fast growing area with a large young population
- Ample carparking on c.o.2 hectare site



GROUND FLOOR PLAN



## Business Park Specifications Fast Food Restaurant

- High profile location at main entrance of park
- Excellent onsite surface car parking
- Contemporary Art Deco design with feature glazing
- Purpose built design and layout
- Location provides easy access for drive through traffic
- Approx. internal floor area 348 sq.m.

### JOINT AGENTS



1 South Mall, Cork  
 Tel: 021 4275079  
 Fax: 021 4272405  
 Contacts:  
 Margaret Kelleher (mkelleher@lisney.com)  
 Edward Hanafin (ehanafin@lisney.com)



23 Marlboro Street, Cork  
 Tel: 021 4277745  
 Fax: 021 4272346  
 Contact:  
 Gerard O'Callaghan (gocallaghan@remax.net)

